



Solution & Innovation

BEARING SOLUTIONS FOR THE MATERIAL HANDLING INDUSTRY



Mounted Units Tailored for the Material Handling Industry



Material Handling applications present challenging environmental conditions that demand flexible mounting and locking styles and zero downtime. Standard bearings are often designed for use in other industries with less demanding applications and don't provide the features needed for this specific application. SI Bearing Company offers a full line of mounted bearing units tailored specifically for the Material Handling industry.

SI insert bearings are offered with seals from moderate to extreme contamination applications. Available locking options include set screw, eccentric locking collar and SI's patented GRIP-IT™ PLUS which provide the solutions required

for the industry application needs. Newly developed, highly visible, open and close ended caps are also available on Material Handling units to provide protection against injuries due to contact with rotating parts.

Common Applications

- Conveyor systems
- Packaging equipment
- Palletizers
- HVAC systems and air handling units
- Ventilation fans
- Baggage handling equipment



R (MH)



G (MHAP)

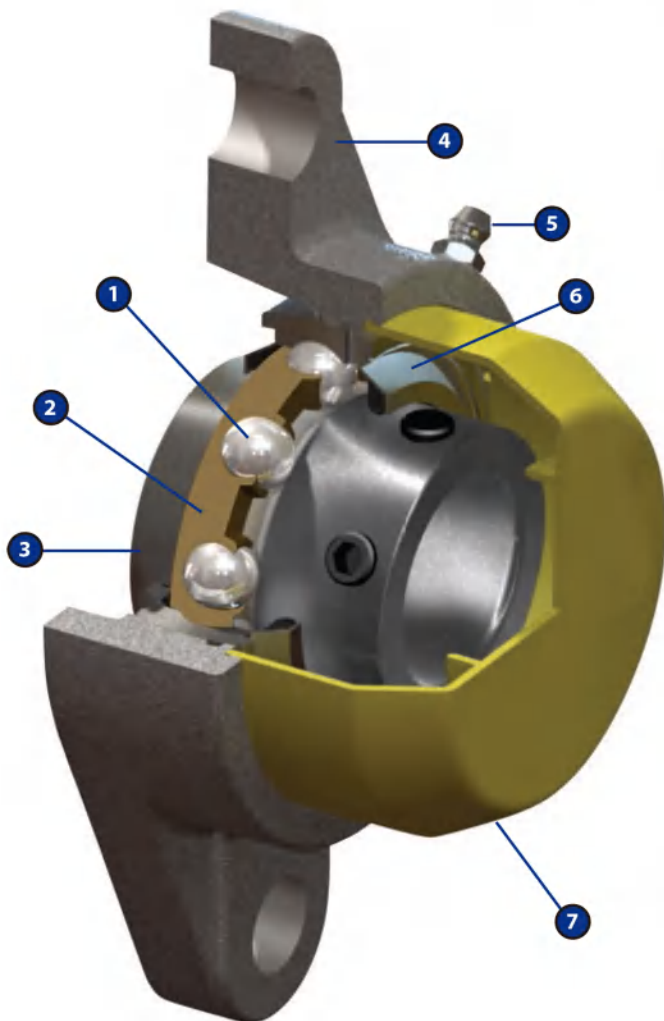
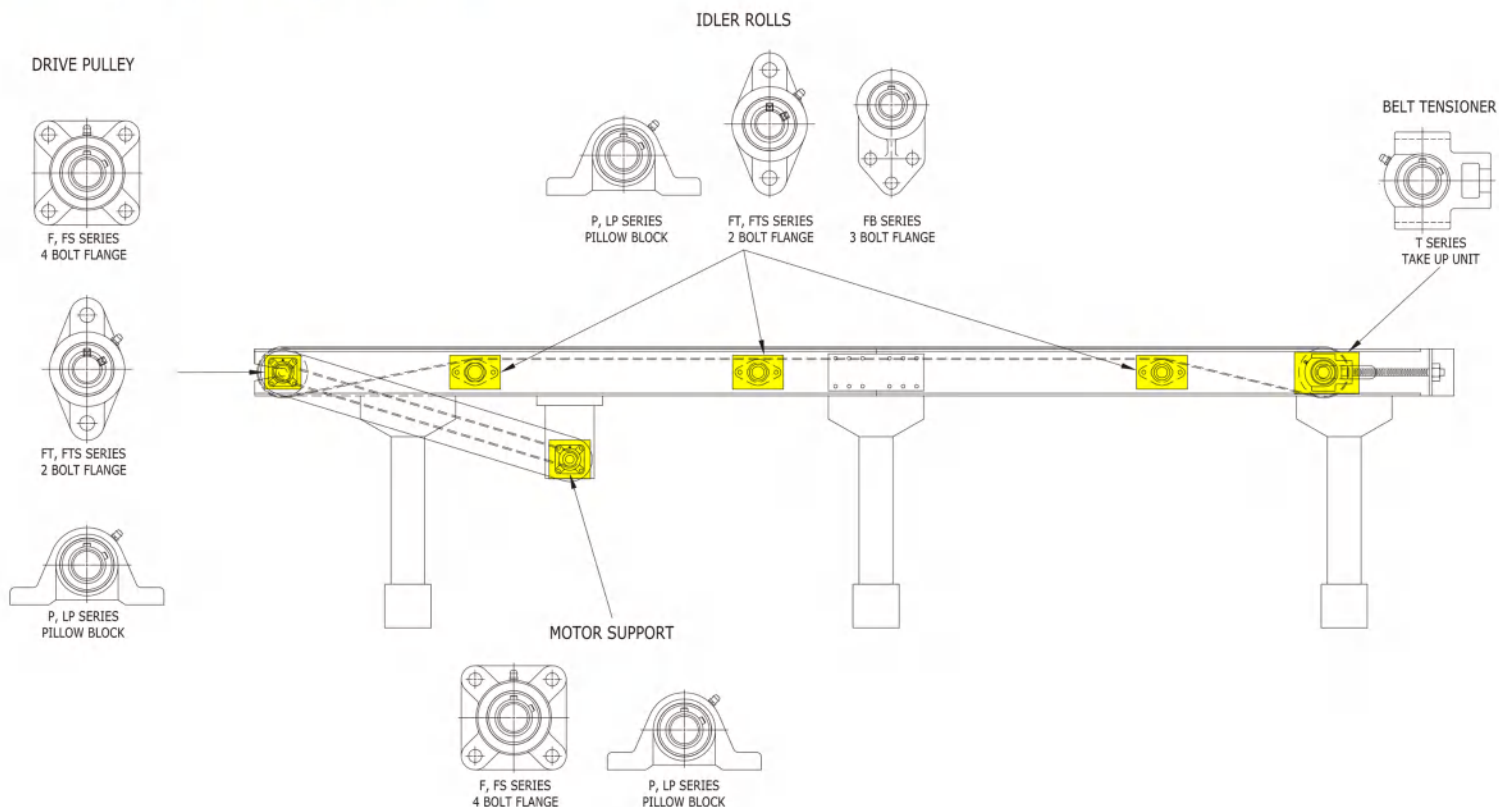
Mounted Units Features & Benefits

FEATURE	BENEFIT	R (MH)	G (MHAP)
Contact seal	Contamination prevention	Moderate	Extreme
High quality through hardened bearing steel	Improves fatigue life	X	X
Precision ground and superfinished raceways	Reduces vibration and extends life	X	X
Protective end cap available	Protects from incidental contact with rotating shaft and bearing	X	X
Set screw and eccentric locking collar	Multiple options to suit each application	X	X
GRIP-IT™ Plus locking	Concentric 360° hold		X
Premium nitrile seal material	Longer seal life due to improved high temperature and wear resistance		X
Heavy gauge steel shroud	Protects seal from large solid contaminants (stones, pebbles, dirt)		X
Increased grease fill	Improves contaminant exclusion		X
Premium polyurea thickened grease	High and low temperature capability extends grease life		X
Nylon retainer	Improves misalignment capability		X
Extended single seal lip design	Extends life and improves contaminant protection		X
Knurled landing grooves	Optimizes seal retention		X

R (MH) = RST Seal and slinger for material handling units

G (MHAP) = G Seal for high performance material handling units

Conveyor Bearing Locations



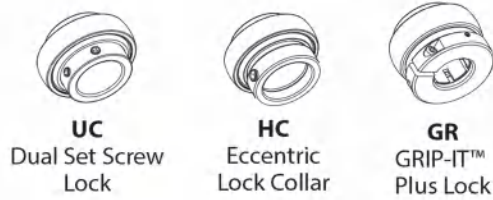
Material Handling Unit Features (MHAP)

1. Grade 10 balls for smooth operation
2. Nylon 6/6 ball retainer designed to accommodate misalignment
3. High quality bearing insert with multiple locking styles
4. Housings manufactured from high strength ASTM Grade 30 cast iron
5. Optional relubrication feature
6. Seals manufactured from high quality nitrile rubber bonded to heavy gauge steel shrouds
7. Optional protective end caps molded from a highly visible and durable polymer

SI protective end caps (see pg. 7) are available in sizes to accommodate from $\frac{3}{4}$ " (20mm) to $2\frac{7}{16}$ " (60mm) shaft sizes. Protective end caps can be used with dual set screw, eccentric locking collar and SI's patented GRIP-IT™ Plus insert bearings in combination with standard cast iron housings including medium-duty and 300 series.

UC FT 205-16 MH

BEARING TYPE



CASTING STYLE

P (Pillow Block)
LP (Low profile Pillow Block)
FB (3-Bolt Flange Bracket)
T (Take-up unit)
FT (2-Bolt Flange for UC & GR Bearings)
FTS (2-Bolt Flange for HC Bearings)
F (4-Bolt Flange for UC & GR Bearings)
FS (4-Bolt Flange for HC Bearings)

MH (Groove machined in casting for End Cap)
MHAP (Groove machined in casting for End Cap with Premium Seals)

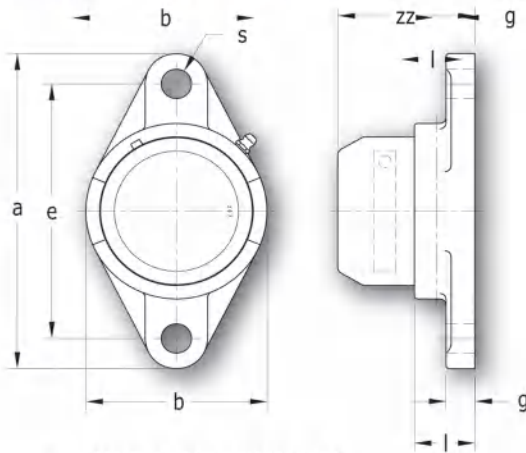
BEARING BORE SIZE

12 = 3/4"	23 = 1 7/16"	50mm
20mm	35mm	32 = 2"
16 = 1"	24 = 1 1/2"	35 = 2 3/16"
25mm	40mm	55mm
19 = 1 3/16"	28 = 1 3/4"	39 = 2 7/16"
30mm	45mm	60mm
20 = 1 1/4"	31 = 1 5/16"	

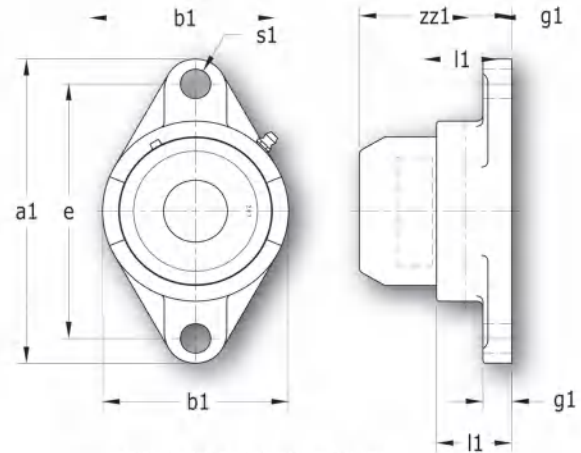
BEARING OUTER RING SIZE

204 = 47mm	209 = 85mm
205 = 52mm	210 = 90mm
206 = 62mm	211 = 95mm
207 = 72mm	212 = 100mm
208 = 80mm	

2-Bolt Flange Unit Specifications



FT SERIES 2-BOLT FLANGE UNITS
DUAL SET SCREW
GRIP-IT™ PLUS COLLAR



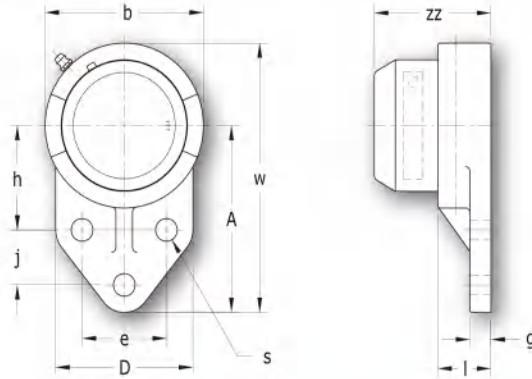
FTS SERIES 2-BOLT FLANGE UNITS
ECCENTRIC LOCK COLLAR

SIZE	DIMENSIONS MM/ (IN.)													FT Series Bolt Size (in.)	FTS Series Bolt Size (in.)
	a	a1	e	g	g1	l	l1	s	s1	b	b1	zz	zz1		
204	113.00 (4.449")	113.00 (4.449")	89.70 (3.531")	11.10 (.437")	11.10 (.437")	24.00 (.945")	29.00 (1.142")	11.00 (.433")	12.00 (.472")	60.30 (2.374")	60.30 (2.374")	56.20 (2.213")	60.70 (2.390")	3/8"	3/8"
205	130.20 (5.126")	123.80 (4.874")	98.80 (3.890")	12.70 (.500")	13.50 (.531")	26.00 (1.024")	29.60 (1.165")	13.50 (.531")	12.00 (.472")	68.30 (2.689")	69.90 (2.752")	59.00 (2.323")	62.30 (2.453")	7/16"	3/8"
206	147.60 (5.811")	141.30 (5.563")	116.70 (4.594")	12.70 (.500")	13.50 (.531")	29.00 (1.142")	34.90 (1.374")	13.50 (.531")	12.00 (.472")	80.20 (3.157")	79.40 (3.126")	61.90 (2.437")	67.60 (2.661")	7/16"	3/8"
207	161.10 (6.343")	155.60 (6.126")	130.20 (5.126")	14.30 (.563")	14.30 (.563")	30.00 (1.181")	37.30 (1.469")	15.00 (.591")	15.00 (.591")	89.70 (3.531")	92.10 (3.626")	67.90 (2.673")	75.20 (2.961")	1/2"	1/2"
208	174.60 (6.874")	171.50 (6.752")	143.70 (5.657")	14.30 (.563")	14.30 (.563")	34.00 (1.339")	38.90 (1.531")	15.00 (.591")	13.50 (.531")	100.00 (3.937")	104.80 (4.126")	71.20 (2.803")	76.10 (2.996")	1/2"	7/16"
209	188.10 (7.406")	179.40 (7.063")	148.40 (5.843")	15.10 (.594")	14.30 (.563")	35.00 (1.378")	44.50 (1.752")	17.00 (.669")	17.00 (.669")	108.00 (4.252")	111.10 (4.374")	72.20 (2.843")	81.20 (3.197")	9/16"	9/16"
210	196.90 (7.752")	189.00 (7.441")	157.20 (6.189")	15.10 (.594")	14.30 (.563")	39.00 (1.535")	46.80 (1.843")	17.00 (.669")	17.00 (.669")	115.10 (4.531")	115.90 (4.563")	75.70 (2.980")	83.50 (3.287")	9/16"	9/16"
211	223.80 (8.811")	216.00 (8.504")	184.20 (7.252")	18.30 (.720")	20.60 (.811")	41.40 (1.630")	50.00 (1.969")	18.00 (.709")	17.00 (.669")	130.20 (5.126")	133.40 (5.252")	88.10 (3.469")	96.70 (3.807")	5/8"	9/16"
212	250.00 (9.843")	235.00 (9.252")	201.60 (7.937")	18.30 (.720")	20.60 (.811")	45.00 (1.772")	53.20 (2.094")	22.00 (.866")	17.00 (.669")	139.70 (5.500")	138.10 (5.437")	92.20 (3.630")	99.90 (3.933")	3/4"	9/16"

Protective end caps sold separately

3-Bolt Flange Bracket Unit Specifications

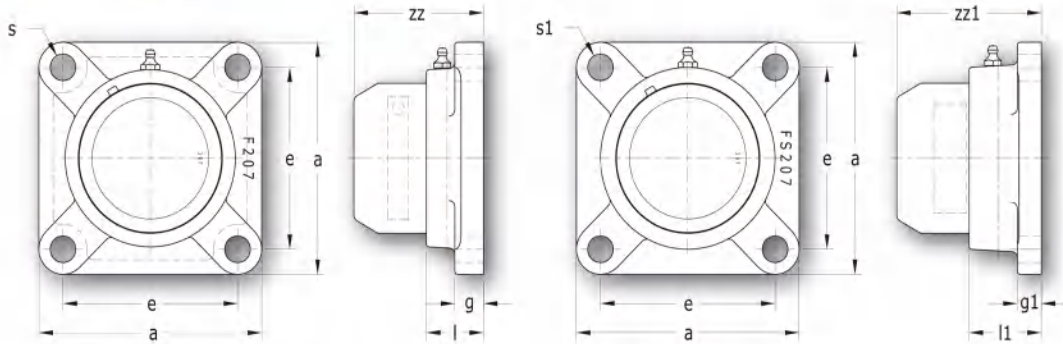
FB SERIES 3-BOLT FLANGE BRACKET UNITS
DUAL SET SCREW LOCK
ECCENTRIC LOCK COLLAR
GRIP-IT™ PLUS COLLAR



SIZE	DIMENSIONS MM / (IN)											BOLT SIZE (in.)
	w	A	b	D	l	s	g	h	j	e	zz	
204	108.00 (4.252")	76.25 (3.002")	63.50 (2.500")	60.30 (2.374")	25.40 (1.000")	9.90 (.390")	8.00 (.315")	42.90 (1.689")	22.20 (.874")	38.10 (1.500")	57.30 (2.256")	5/16
205	120.70 (4.752")	85.75 (3.376")	69.90 (2.752")	63.50 (2.500")	27.20 (1.071")	9.90 (.390")	9.50 (.374")	46.00 (1.811")	28.60 (1.126")	41.30 (1.626")	59.90 (2.358")	5/16
206	136.50 (5.374")	95.20 (3.748")	82.60 (3.252")	69.90 (2.752")	28.60 (1.126")	9.90 (.390")	9.50 (.374")	52.40 (2.063")	31.80 (1.252")	47.60 (1.874")	61.70 (2.429")	5/16
207	155.65 (6.128")	108.00 (4.252")	95.30 (3.752")	82.60 (3.252")	32.00 (1.260")	13.10 (.516")	12.70 (.500")	60.30 (2.374")	31.80 (1.252")	50.80 (2.000")	70.20 (2.764")	7/16
208	164.30 (6.469")	115.50 (4.547")	100.00 (3.937")	77.80 (3.063")	35.70 (1.406")	11.90 (.469")	15.90 (.626")	60.30 (2.374")	41.30 (1.626")	50.00 (1.969")	72.20 (2.870")	3/8
209	175.50 (6.909")	121.10 (4.768")	106.40 (4.189")	80.20 (3.157")	36.80 (1.449")	11.90 (.469")	18.30 (.720")	65.10 (2.563")	42.90 (1.689")	54.00 (2.126")	74.00 (2.913")	3/8
210	190.50 (7.500")	131.75 (5.187")	117.50 (4.626")	101.60 (4.000")	38.00 (1.496")	13.10 (.516")	12.70 (.500")	74.60 (2.937")	41.30 (1.626")	69.90 (2.752")	74.70 (2.941")	7/16

Protective end caps sold separately

4-Bolt Flange Unit Specifications



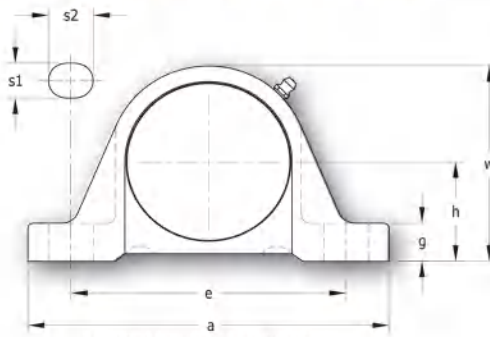
F SERIES STANDARD 4-BOLT FLANGE UNITS
DUAL SET SCREW LOCK
GRIP-IT™ PLUS COLLAR

FS SERIES 2-BOLT FLANGE UNITS
ECCENTRIC LOCK COLLAR

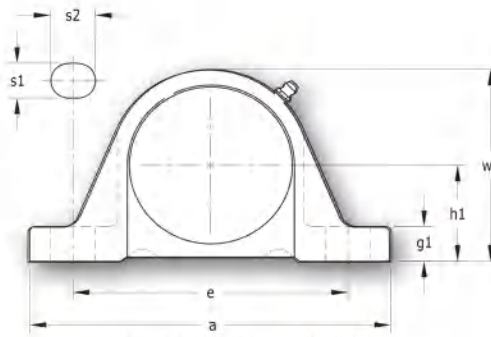
SIZE	DIMENSIONS MM / (IN)										F SERIES BOLT SIZE (IN.)	FS SERIES BOLT SIZE (IN.)
	a	e	g	g1	l	l1	s	s1	zz	zz1		
204	85.70 (3.374")	63.50 (2.500")	11.10 (.437")	9.50 (.374")	25.40 (1.000")	28.80 (1.134")	11.00 (.433")	12.00 (.472")	57.30 (2.256")	60.70 (2.390")	3/8	3/8
205	95.30 (3.752")	69.90 (2.752")	12.70 (.500")	11.10 (.437")	26.90 (1.059")	31.20 (1.228")	12.00 (.472")	12.00 (.472")	59.75 (2.352")	64.10 (2.524")	3/8	3/8
206	108.00 (4.252")	82.60 (3.252")	14.30 (.563")	15.90 (.626")	27.30 (1.075")	34.30 (1.350")	12.00 (.472")	13.50 (.531")	-	67.20 (2.630")	3/8	7/16
207	117.50 (4.626")	92.10 (3.626")	15.10 (.594")	12.70 (.500")	30.10 (1.185")	38.10 (1.500")	13.50 (.531")	13.50 (.531")	68.30 (2.677")	75.50 (2.972")	7/16	7/16
208	130.20 (5.126")	101.60 (4.000")	15.10 (.594")	16.70 (.657")	35.70 (1.406")	38.90 (1.531")	15.00 (.591")	15.00 (.591")	72.90 (2.870")	76.10 (2.996")	1/2	1/2
209	136.50 (5.374")	105.00 (4.134")	15.90 (.626")	18.30 (.720")	38.10 (1.500")	39.70 (1.563")	15.00 (.591")	17.00 (.669")	75.20 (2.961")	76.90 (3.028")	1/2	9/16
210	142.90 (5.626")	111.10 (4.374")	15.90 (.626")	15.90 (.626")	39.70 (1.563")	46.00 (1.811")	15.00 (.591")	17.00 (.669")	76.40 (3.008")	82.70 (3.256")	1/2	9/16
211	161.90 (6.374")	130.20 (5.126")	18.30 (.720")	17.50 (.689")	42.90 (1.689")	50.00 (1.969")	18.00 (.709")	18.00 (.709")	89.25 (3.514")	96.70 (3.807")	5/8"	5/8"
212	174.60 (6.874")	142.90 (5.626")	18.30 (.720")	17.50 (.689")	47.60 (1.874")	54.80 (2.157")	18.00 (.709")	18.00 (.709")	94.45 (3.719")	101.50 (3.996")	5/8"	5/8"

Protective end caps sold separately

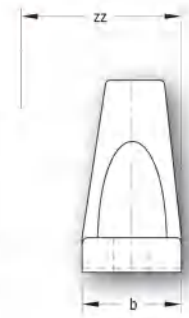
Pillow-Block Unit Specifications



P SERIES PILLOW-BLOCK UNITS
DUAL SET SCREW
GRIP-IT™ PLUS COLLAR
ECCENTRIC LOCK COLLAR



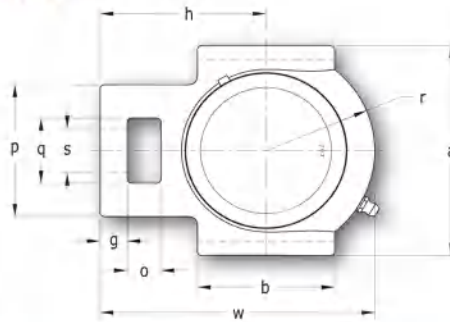
LP SERIES PILLOW-BLOCK UNITS
DUAL SET SCREW
GRIP-IT™ PLUS COLLAR
ECCENTRIC LOCK COLLAR



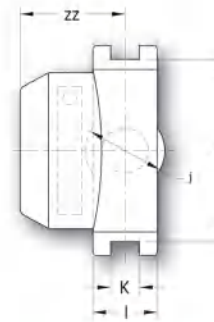
SIZE	DIMENSIONS MM / (IN)											BOLT SIZE (in.)
	h	h1	a	e	b	s1	s2	g	g1	w	w1	
204	33.34 (1.313")	31.75 (1.250")	127.00 (5.000")	95.25 (3.750")	34.00 (1.339")	12.70 (.500")	19.05 (.750")	13.49 (.531")	11.91 (.469")	64.29 (2.531")	62.71 (2.469")	3/8
205	36.51 (1.437")	33.34 (1.313")	139.70 (5.500")	104.78 (4.125")	38.10 (1.500")	12.70 (.500")	19.05 (.750")	15.88 (.625")	12.70 (.500")	70.64 (2.781")	67.47 (2.656")	3/8
206	42.86 (1.687")	39.69 (1.563")	165.10 (6.500")	120.65 (4.750")	44.60 (1.756")	16.67 (.656")	20.64 (.812")	16.67 (.656")	13.49 (.531")	83.34 (3.281")	80.17 (3.156")	1/2
207	47.63 (1.875")	46.04 (1.813")	166.69 (6.563")	127.00 (5.000")	45.80 (1.803")	16.67 (.656")	20.64 (.812")	18.26 (.719")	16.67 (.656")	93.66 (3.687")	92.08 (3.625")	1/2
208	49.21 (1.937")	49.21 (1.937")	184.15 (7.250")	137.32 (5.406")	48.80 (1.921")	16.67 (.656")	20.64 (.812")	20.64 (.812")	20.64 (.812")	101.60 (4.000")	101.60 (4.000")	1/2
209	53.98 (2.125")	52.39 (2.063")	189.71 (7.469")	146.05 (5.750")	51.20 (2.016")	16.67 (.656")	20.64 (.812")	19.05 (.750")	17.46 (.687")	107.95 (4.250")	106.36 (4.187")	1/2
210	57.15 (2.250")	55.56 (2.187")	206.38 (8.125")	158.75 (6.250")	55.60 (2.189")	19.84 (.781")	22.23 (.875")	19.05 (.750")	17.46 (.687")	115.89 (4.563")	114.30 (4.500")	5/8
211	63.50 (2.500")	61.91 (2.437")	219.08 (8.625")	170.66 (6.719")	58.90 (2.319")	19.84 (.781")	22.23 (.875")	22.23 (.875")	20.64 (.813")	126.21 (4.969")	124.62 (4.906")	5/8"
212	69.85 (2.750")	68.26 (2.687")	239.71 (9.437")	184.15 (7.250")	64.30 (2.425")	19.84 (.781")	25.40 (1.000")	22.23 (.875")	20.64 (.813")	141.29 (5.563")	139.70 (5.500")	5/8"

Protective end caps not available

Take-Up Unit Specifications



T SERIES TAKE-UP UNITS
DUAL SET SCREW
GRIP-IT™ PLUS COLLAR
ECCENTRIC LOCK COLLAR

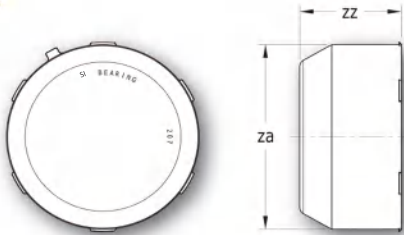


SIZE	DIMENSIONS MM / (IN)														
	o	g	p	q	s	b	K	e	a	w	j	l	r	h	zz
204	15.90 (.626")	10.30 (.406")	50.80 (2.000")	31.80 (1.252")	19.10 (.752")	50.80 (2.000")	13.50 (.531")	76.20 (3.000")	88.90 (3.500")	94.40 (3.717")	31.80 (1.252")	20.60 (.811")	33.30 (1.311")	61.10 (2.406")	41.90 (1.650")
205	15.90 (.626")	10.30 (.406")	50.80 (2.000")	31.80 (1.252")	19.10 (.752")	50.80 (2.000")	13.50 (.531")	76.20 (3.000")	88.90 (3.500")	96.80 (3.811")	31.80 (1.252")	23.80 (.937")	34.90 (1.374")	61.90 (2.437")	43.75 (1.722")
206	15.90 (.626")	10.30 (.406")	56.40 (2.220")	37.30 (1.469")	21.80 (.858")	57.20 (2.252")	13.50 (.531")	88.90 (3.500")	102.40 (4.031")	112.80 (4.441")	37.30 (1.469")	27.80 (1.094")	42.90 (1.689")	69.90 (2.752")	43.00 (1.693")
207	15.90 (.626")	12.70 (.500")	64.30 (2.531")	37.30 (1.469")	21.80 (.858")	64.30 (2.531")	13.50 (.531")	88.90 (3.500")	102.40 (4.031")	128.80 (5.071")	37.30 (1.469")	30.20 (1.189")	51.00 (2.008")	77.80 (3.063")	49.40 (1.945")
208	19.10 (.752")	15.90 (.626")	83.30 (3.280")	49.20 (1.937")	29.00 (1.142")	83.30 (3.280")	17.50 (.689")	102.00 (4.016")	114.30 (4.500")	144.50 (5.689")	49.20 (1.937")	33.30 (1.311")	56.40 (2.220")	88.10 (3.469")	52.30 (2.059")
209	21.10 (.831")	15.90 (.626")	83.30 (3.280")	51.20 (2.016")	29.00 (1.142")	83.30 (3.280")	17.50 (.689")	102.00 (4.016")	116.70 (4.594")	144.50 (5.689")	49.20 (1.937")	34.90 (1.374")	57.20 (2.252")	87.30 (3.437")	51.30 (2.020")
210	19.10 (.752")	15.90 (.626")	83.30 (3.280")	49.20 (1.937")	29.00 (1.142")	85.70 (3.374")	17.50 (.689")	102.00 (4.016")	116.70 (4.594")	148.40 (5.843")	49.20 (1.937")	37.30 (1.469")	58.70 (2.311")	89.70 (3.531")	51.30 (2.020")
211	25.40 (1.000")	19.10 (.752")	102.40 (4.031")	64.30 (2.531")	34.90 (1.374")	95.30 (3.752")	22.00 (.866")	130.20 (5.126")	146.10 (5.752")	171.50 (6.752")	64.30 (2.531")	38.10 (1.500")	65.10 (2.563")	106.40 (4.189")	62.70 (2.469")
212	31.80 (1.252")	19.10 (.752")	102.40 (4.031")	64.30 (2.531")	34.90 (1.374")	102.40 (4.031")	22.00 (.866")	130.20 (5.126")	146.10 (5.752")	193.70 (7.626")	64.30 (2.531")	42.10 (1.657")	74.60 (2.937")	119.10 (4.689")	66.05 (2.600")

Protective end caps sold separately

Protective End Cap Specifications

SHAFT CAN PROTRUDE 6.35MM (.250") FROM BEARING INNER RING WITHOUT INTERFERING WITH CAP

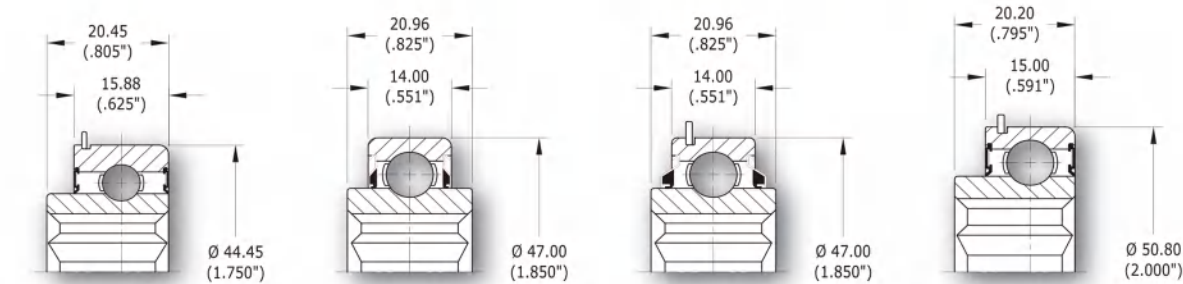


Closed

PART NUMBER	SIZE	DIMENSIONS MM / (IN)	
		za	zz
DC-204-MHE	204	52.00 (2.047")	34.00 (1.339")
DC-205-MHE	205	60.00 (2.362")	35.00 (1.378")
DC-206-MHE	206	69.00 (2.717")	35.00 (1.378")
DC-207-MHE	207	76.00 (2.992")	40.70 (1.602")
DC-208-MHE	208	86.00 (3.386")	40.00 (1.575")
DC-209-MHE	209	92.00 (3.622")	40.00 (1.575")
DC-210-MHE	210	97.00 (3.819")	40.00 (1.575")
DC-211-MHE	211	106.00 (4.173")	50.00 (1.969")
DC-212-MHE	212	116.00 (4.567")	50.00 (1.969")

Open

PART NUMBER	SIZE	DIMENSIONS MM / (IN)		SHAFT DIAMETER
		za	zz	
DC-204-MHE-OPEN	204	52.00 (2.047")	34.00 (1.339")	28.00 (1.102")
DC-205-MHE-OPEN	205	60.00 (2.362")	35.00 (1.378")	35.00 (1.378")
DC-206-MHE-OPEN	206	69.00 (2.717")	35.00 (1.378")	40.00 (1.575")
DC-207-MHE-OPEN	207	76.00 (2.992")	40.70 (1.602")	47.00 (1.850")
DC-208-MHE-OPEN	208	86.00 (3.386")	40.00 (1.575")	50.00 (1.969")
DC-209-MHE-OPEN	209	92.00 (3.622")	40.00 (1.575")	55.00 (2.165")
DC-210-MHE-OPEN	210	97.00 (3.819")	40.00 (1.575")	60.00 (2.362")
DC-211-MHE-OPEN	211	106.00 (4.173")	50.00 (1.969")	67.00 (2.638")
DC-212-MHE-OPEN	212	116.00 (4.567")	50.00 (1.969")	76.00 (2.992")

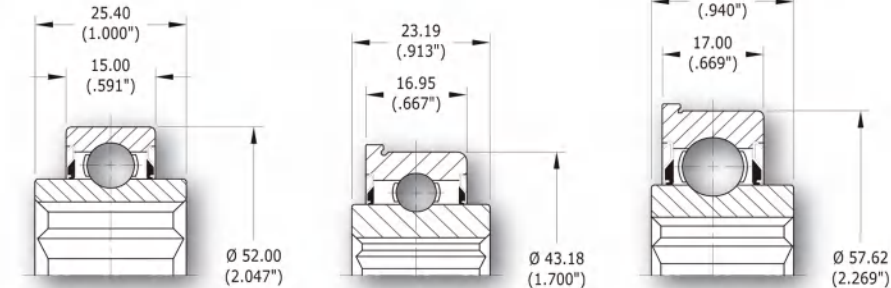


204-2RS-1116HX-NR

204KRR2

204KRR2-NR

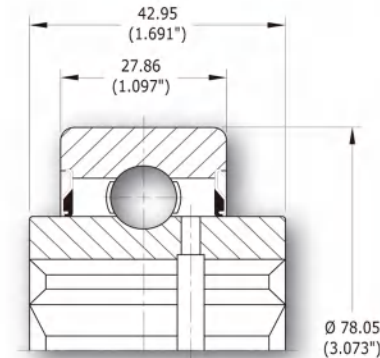
205-2RS-7/8HX-NR



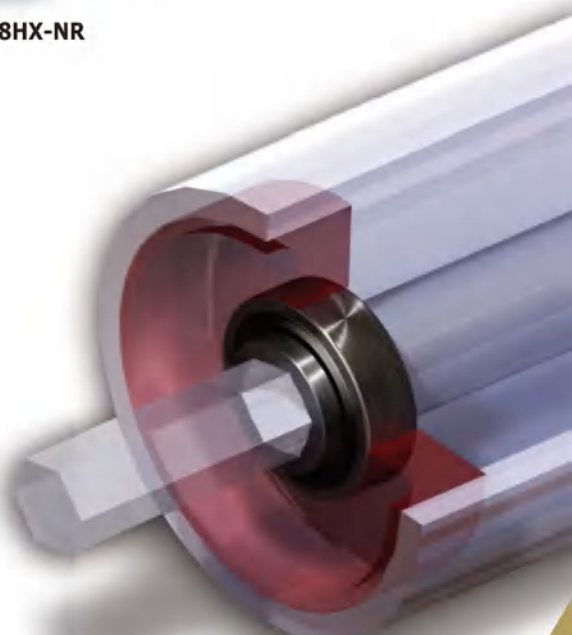
205KRR2

F203KRR716-HX

F205KRR1116-HX



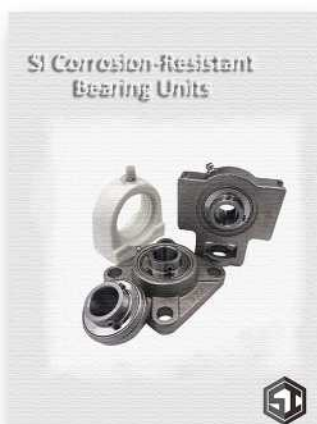
G207KRR28-HX-GI





ABOUT SI

- ▲ Full line of agricultural, radial, mounted unit ball bearings and tapered roller bearings
- ▲ Valued bearing solutions for agricultural (including lawn & garden), electrical, fluid (including HVAC), industrial transmission, material handling (including baggage handling), and off-highway applications
- ▲ Global application engineering support
- ▲ TS 16949 certified manufacturing facilities
- ▲ Dedicated Research and Development center
- ▲ Testing capabilities include: fatigue life, noise/vibration, mud slurry and salt spray testing
- ▲ Flexible manufacturing to allow for low to high volume production
- ▲ Customer service excellence



SI also offers a full line of bearing units for the food and beverage industry. See our brochure SI Corrosion-Resistant Bearing Units for more information.



Trusted Difference at Every Turn

Sichuan Mighty Machinery Co., Ltd.
2, TONGFUXIANG, XIYULONG ST, CHENGDU, CHINA

www.sibearing.com

* SI is a registered trademark of the SI Group of Companies.™
Trusted Difference at Every Turn is a trademark of the SI Group of Companies.

MH ENG VER2_0816